

Waterwatch Community Monitoring

From Monitoring to Action

Communities caring for Catchments

Manningham City Council

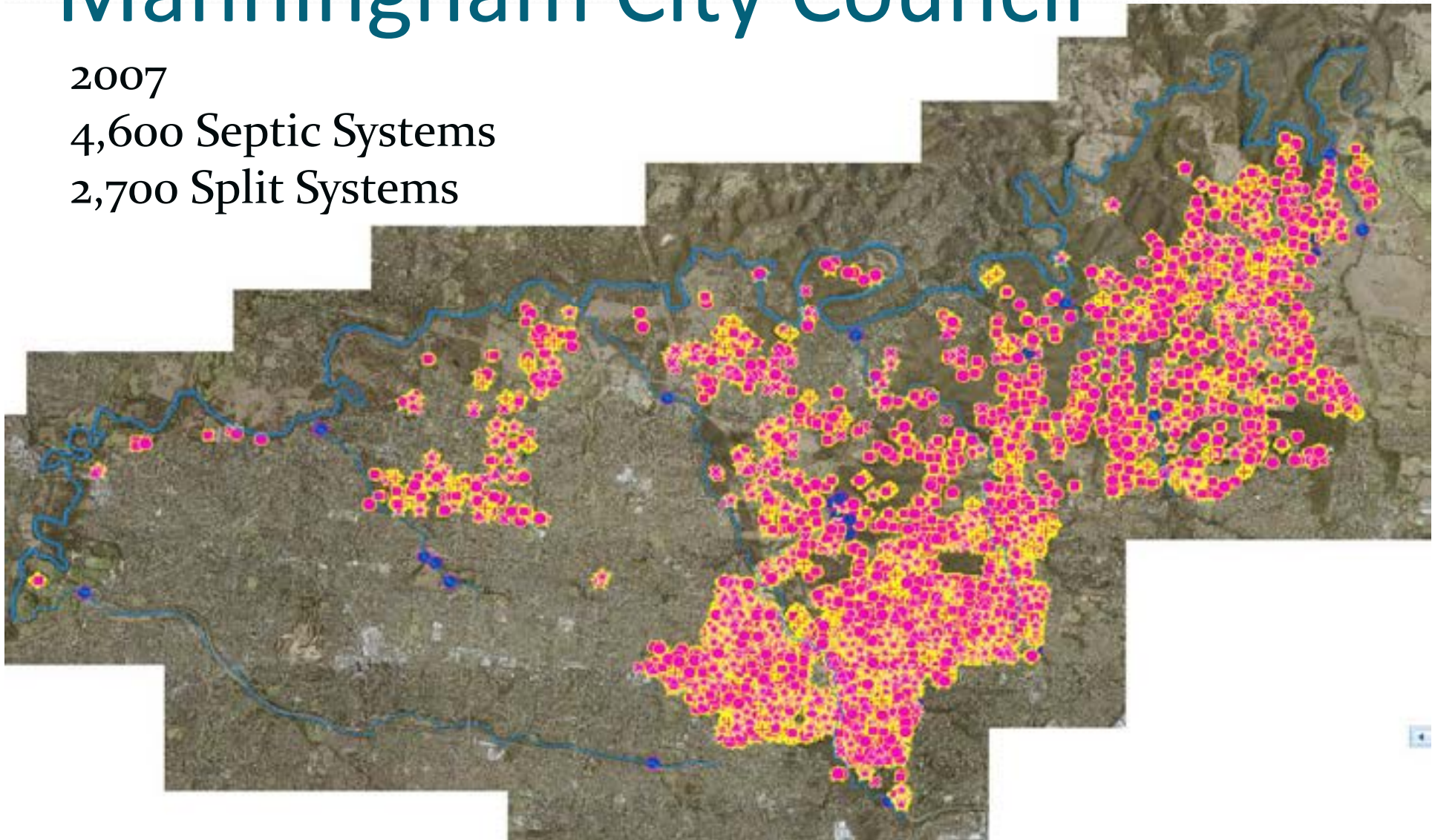


Manningham City Council

2007

4,600 Septic Systems

2,700 Split Systems



Waterwatch Network 2007



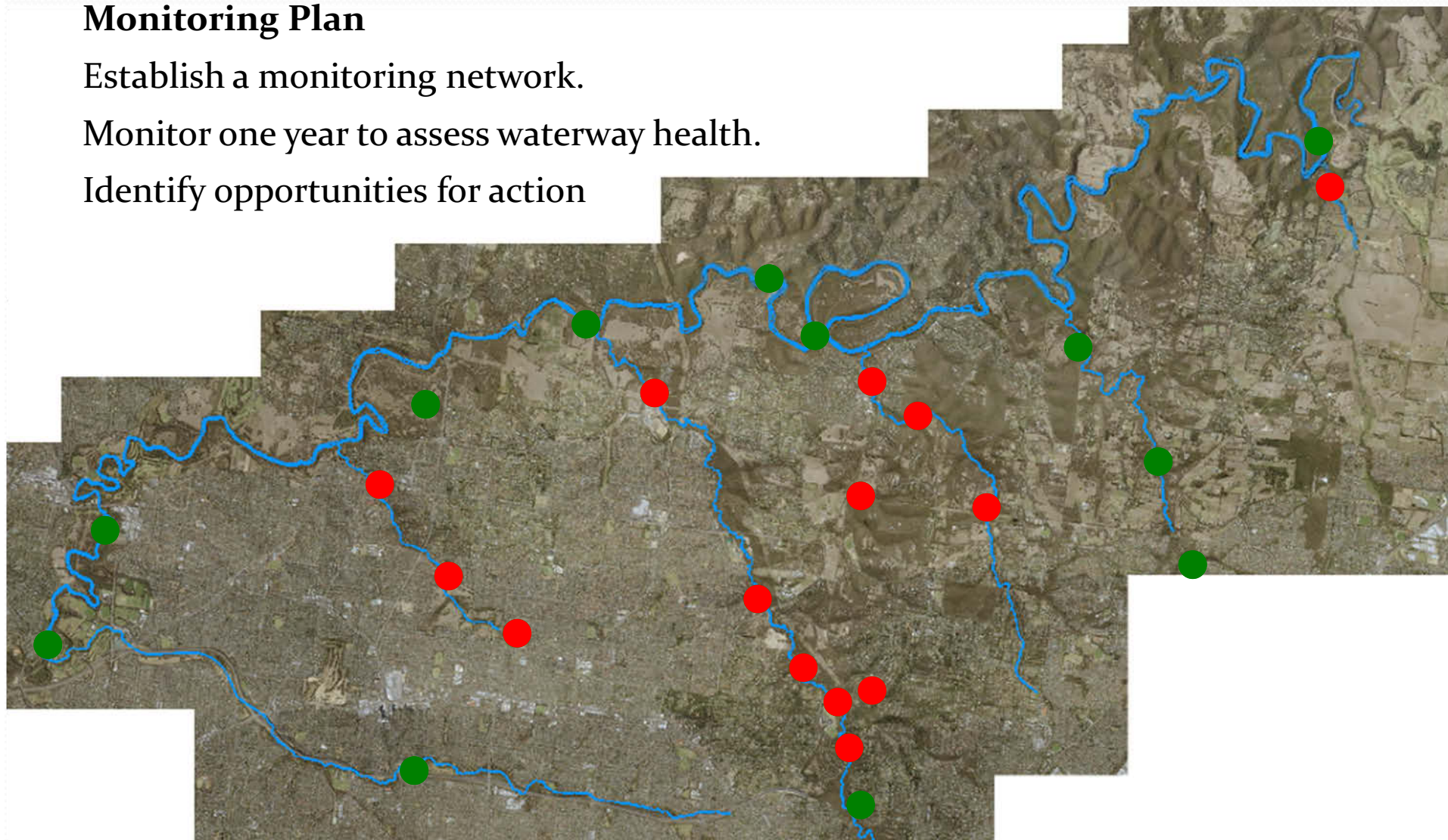
Monitoring Plan & Sites 2007

Monitoring Plan

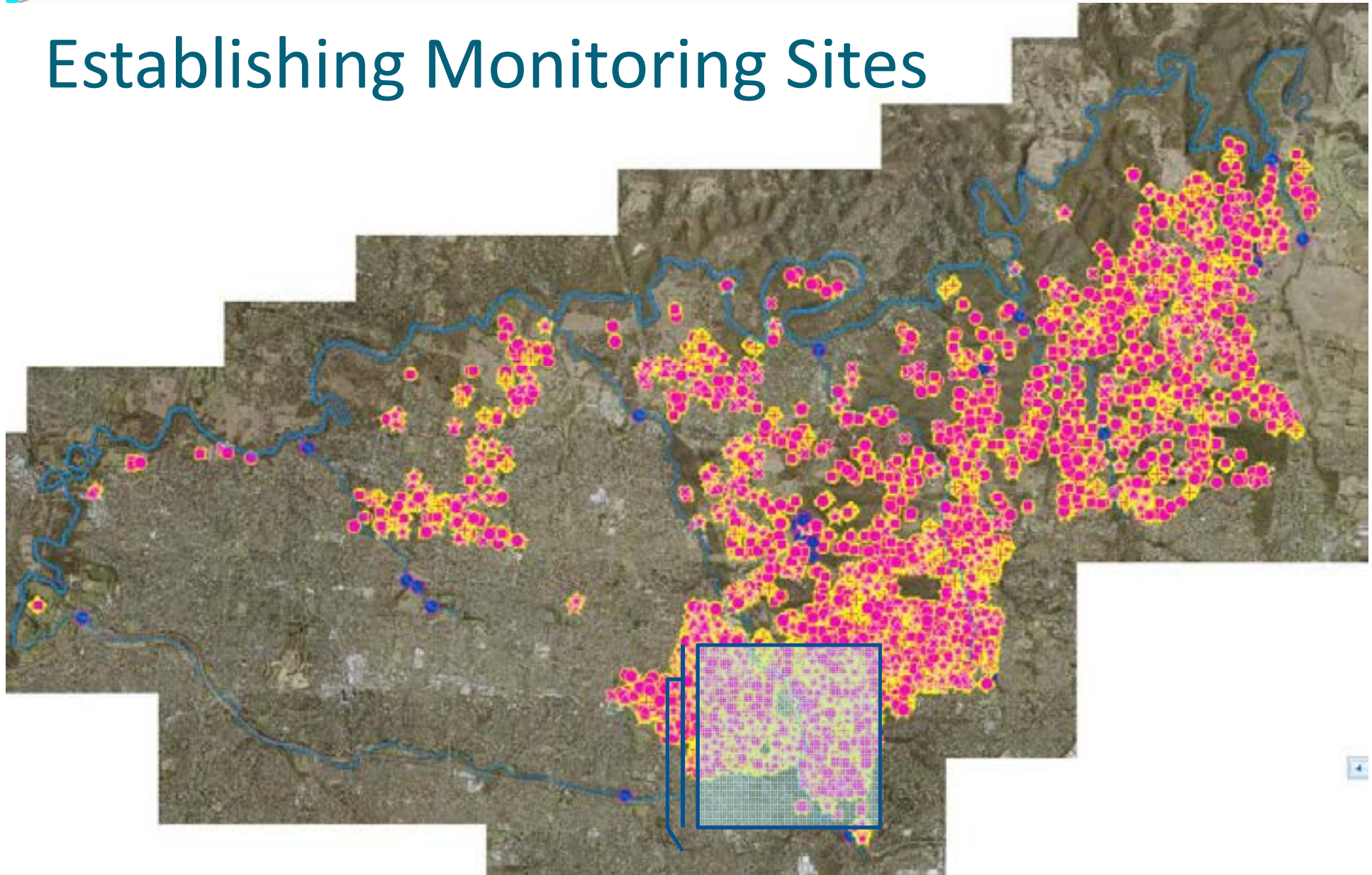
Establish a monitoring network.

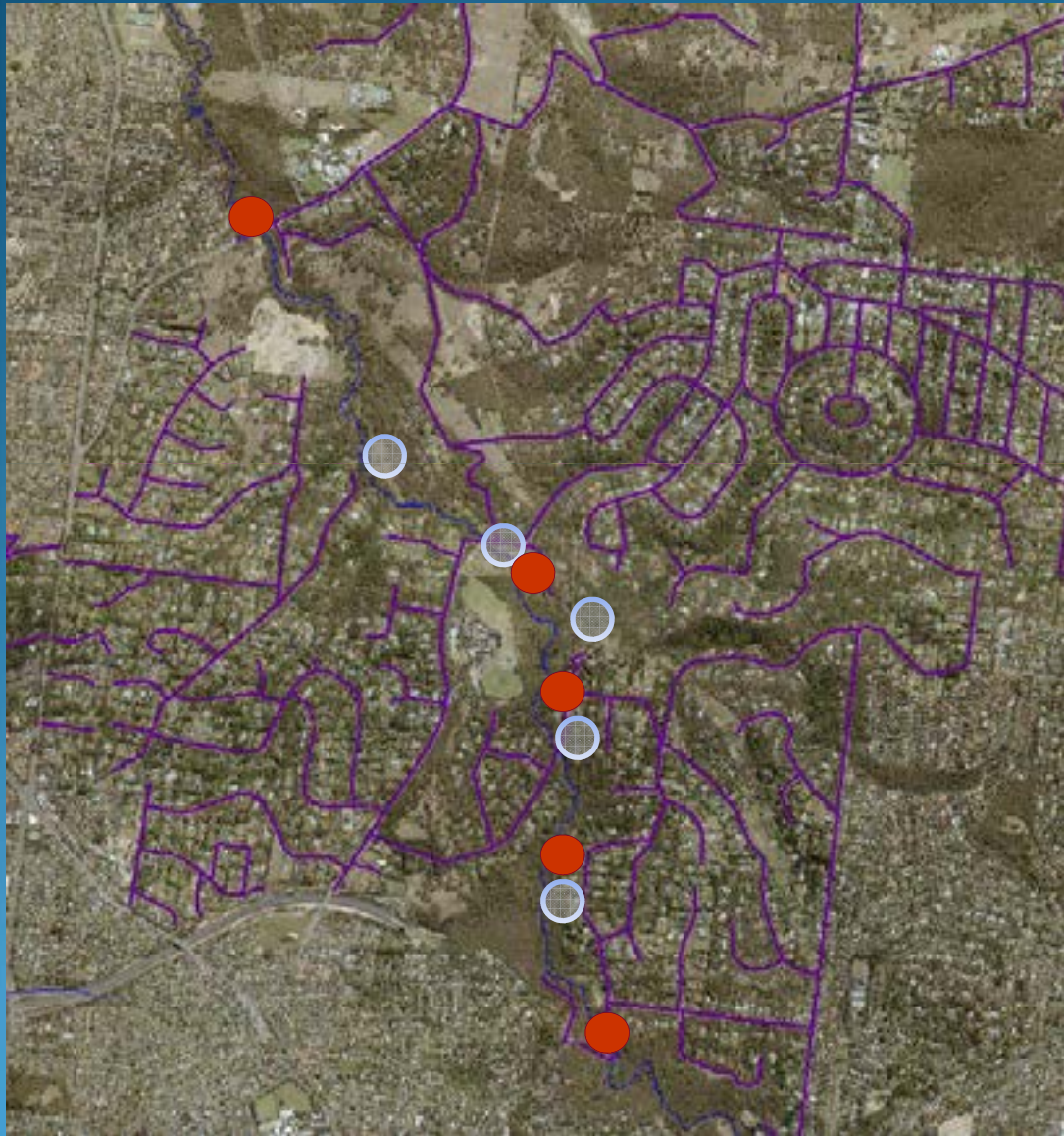
Monitor one year to assess waterway health.

Identify opportunities for action



Establishing Monitoring Sites





Mullum Mullum Creek

1,547 Septic Systems

Split grey water systems
discharge into stormwater
system

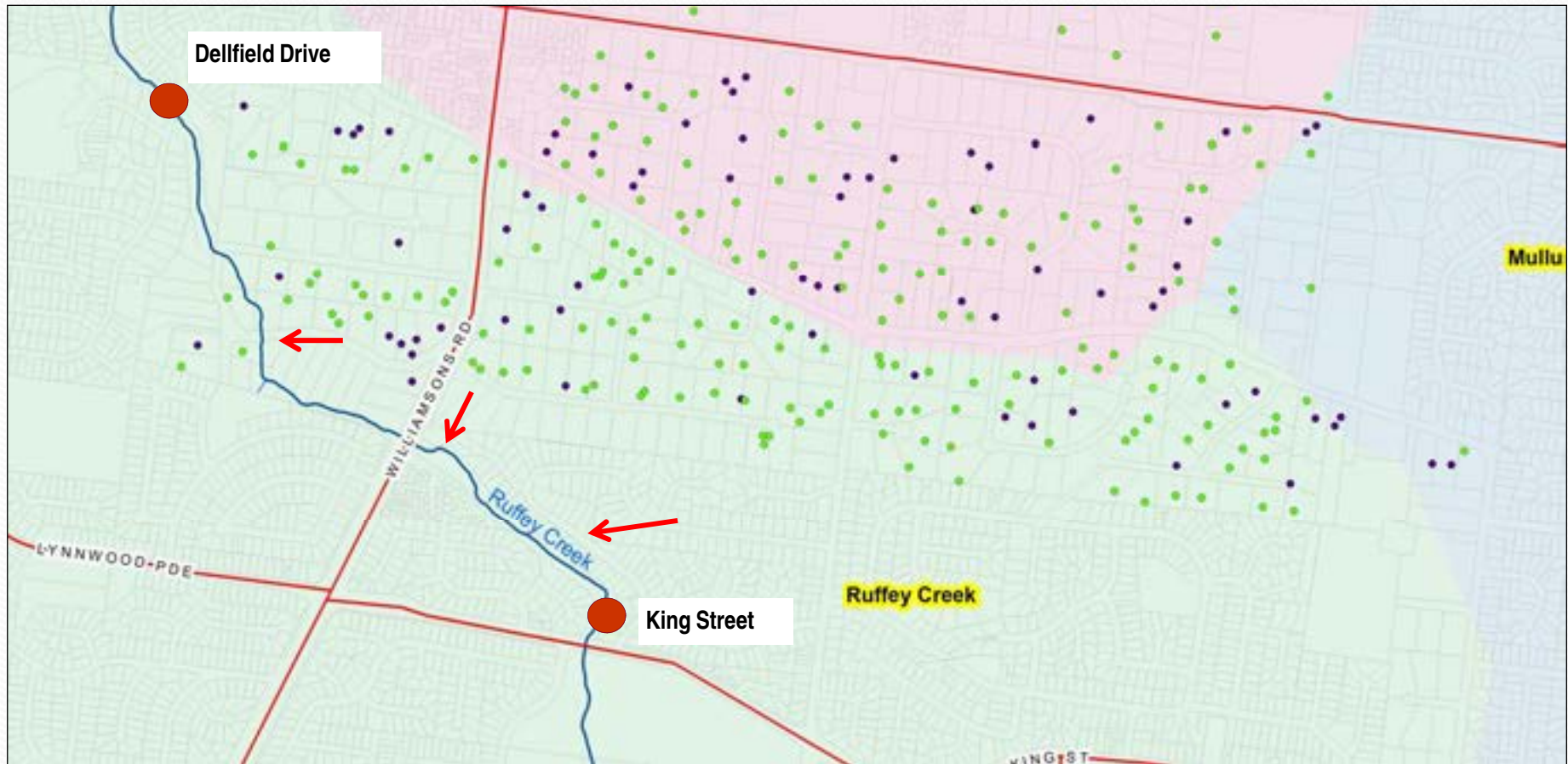
Point source water pollution



An aerial photograph of a rural landscape. A river flows from the top left towards the center. The land is divided into various fields and patches of vegetation. Several purple lines are overlaid on the image, forming a network of boundaries or paths that cross the landscape. The overall tone is brownish-green, typical of an aerial photograph.



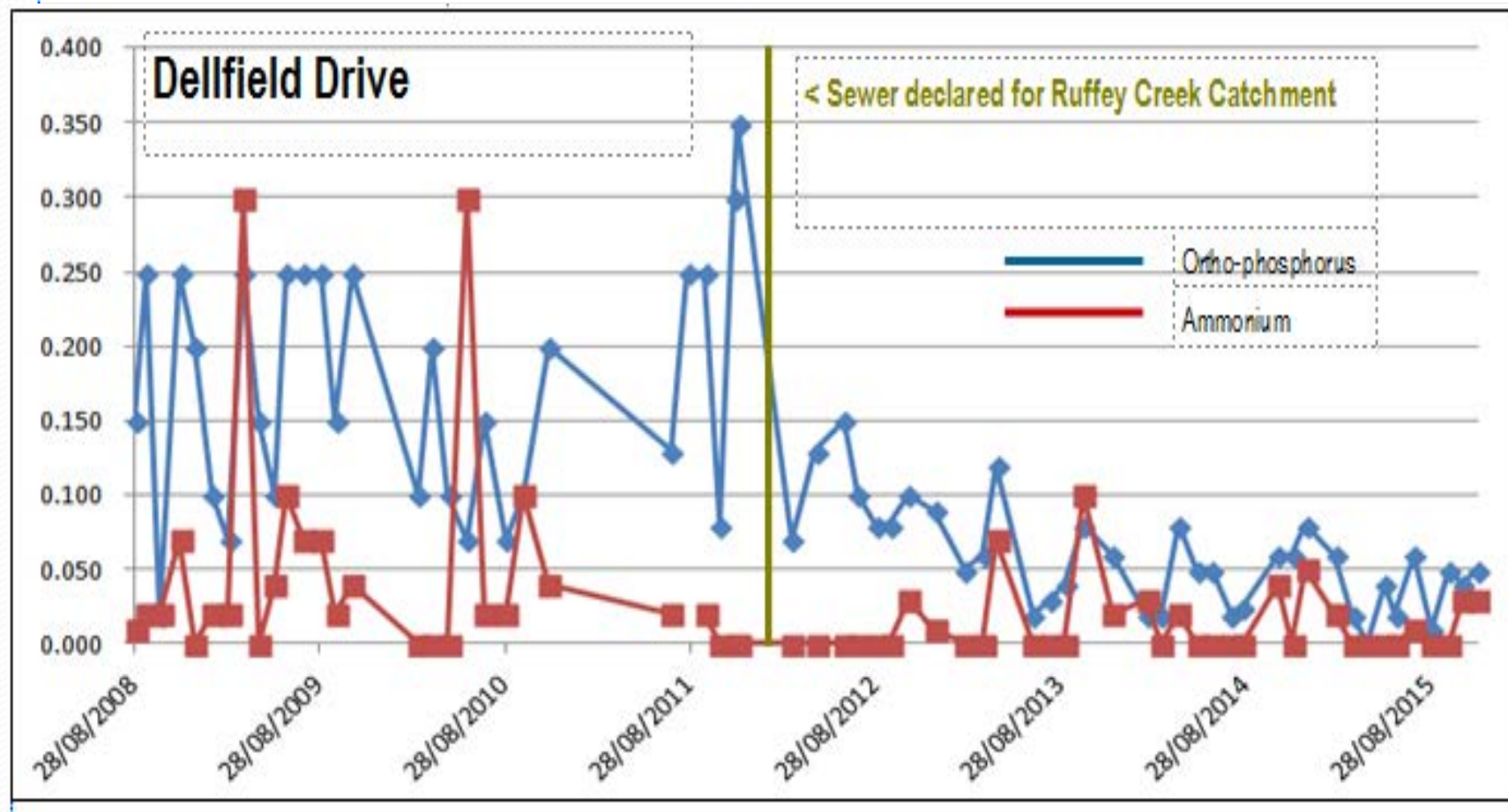
Ruffey Creek



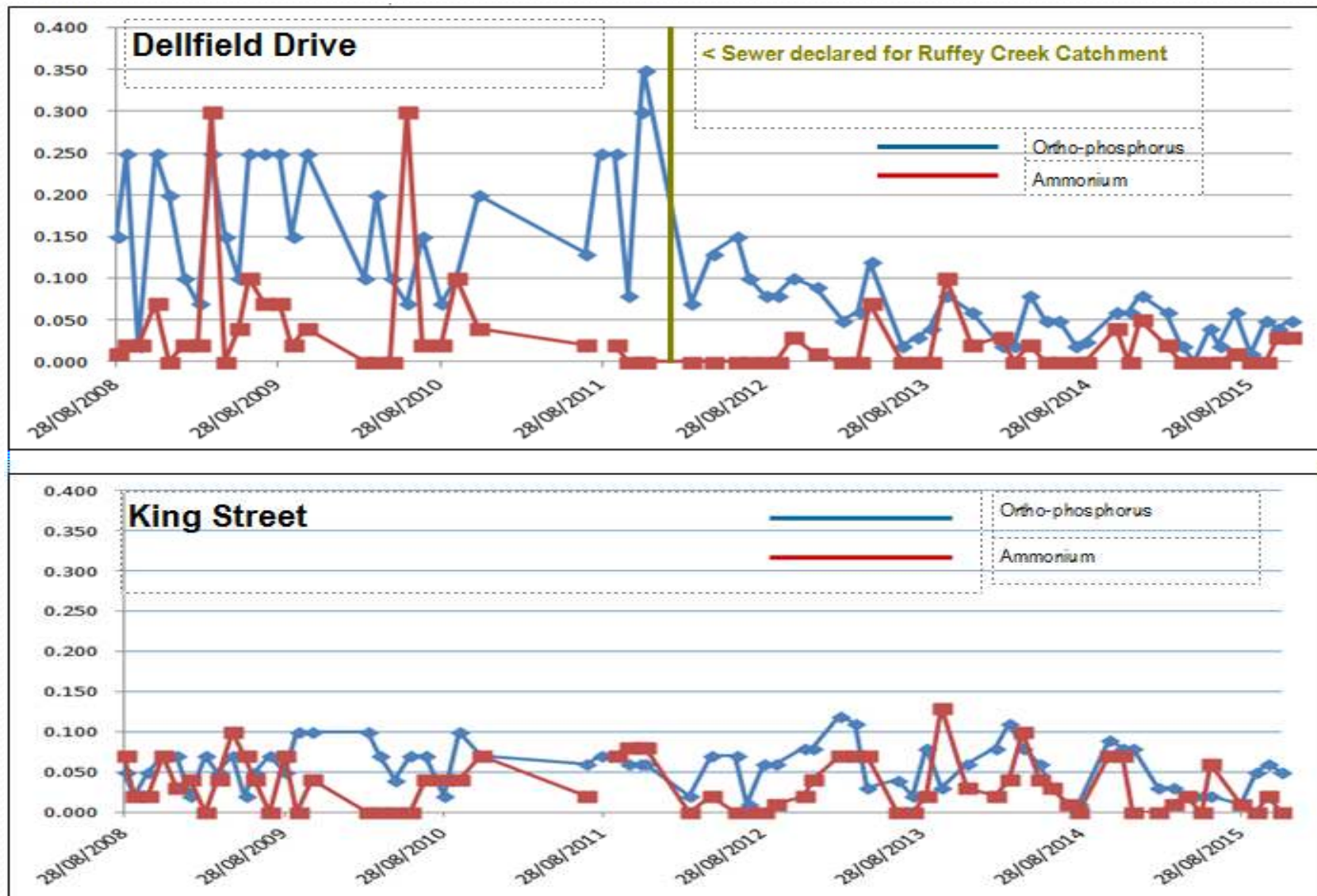


Ruffey Creek

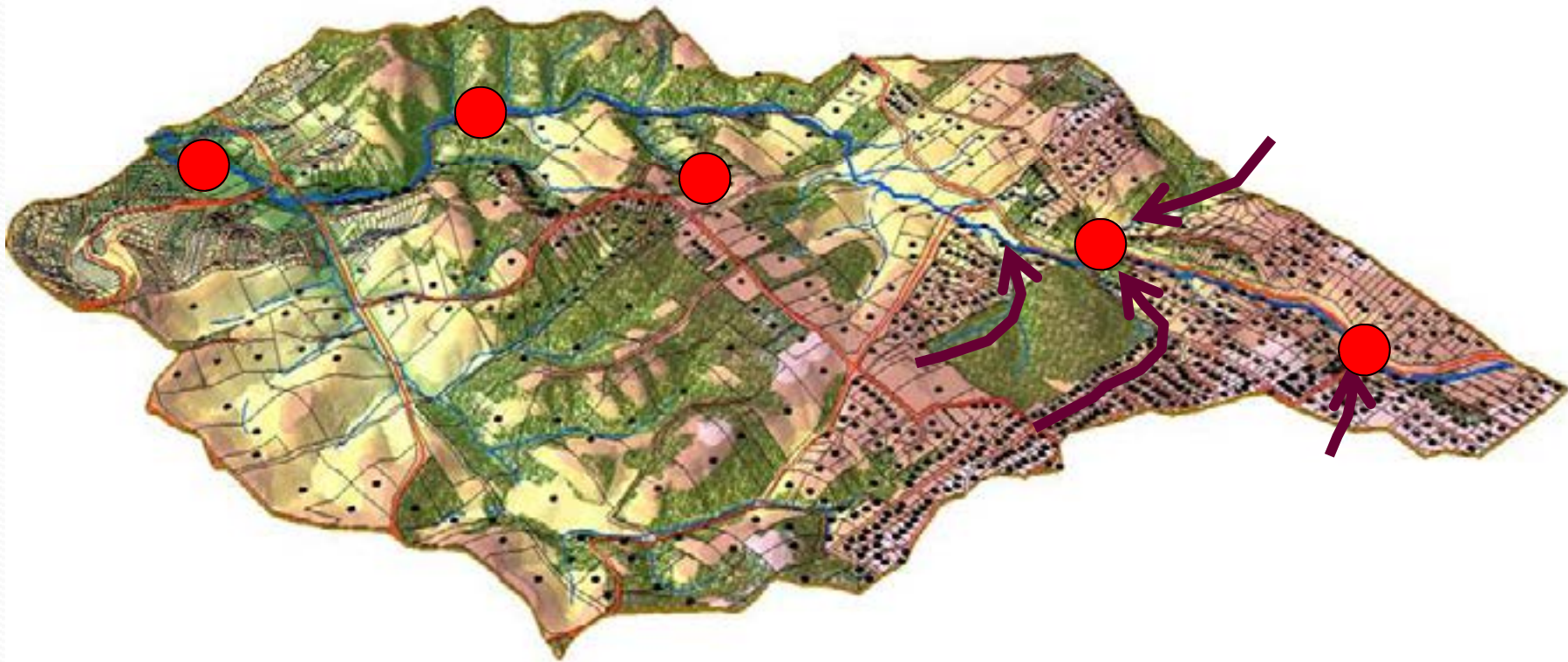
Ruffey Creek



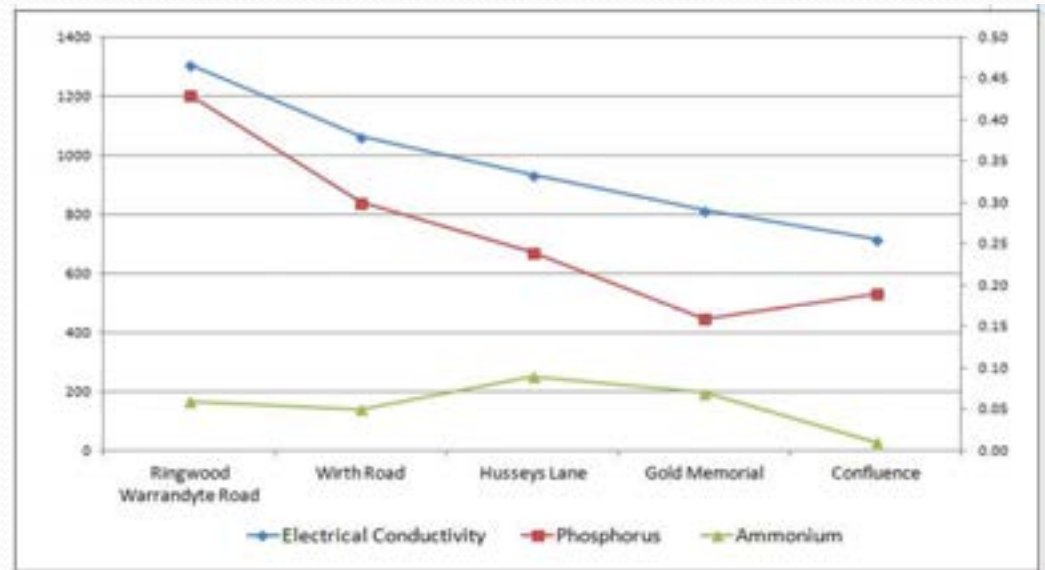
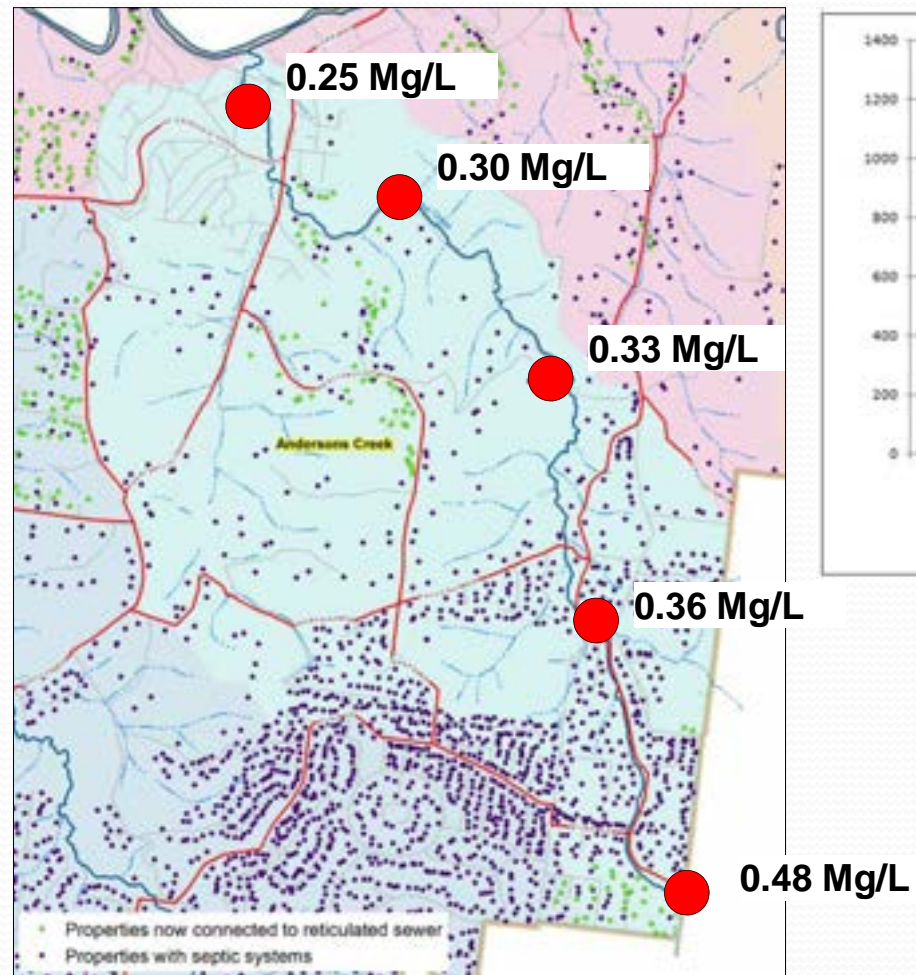
Ruffey Creek



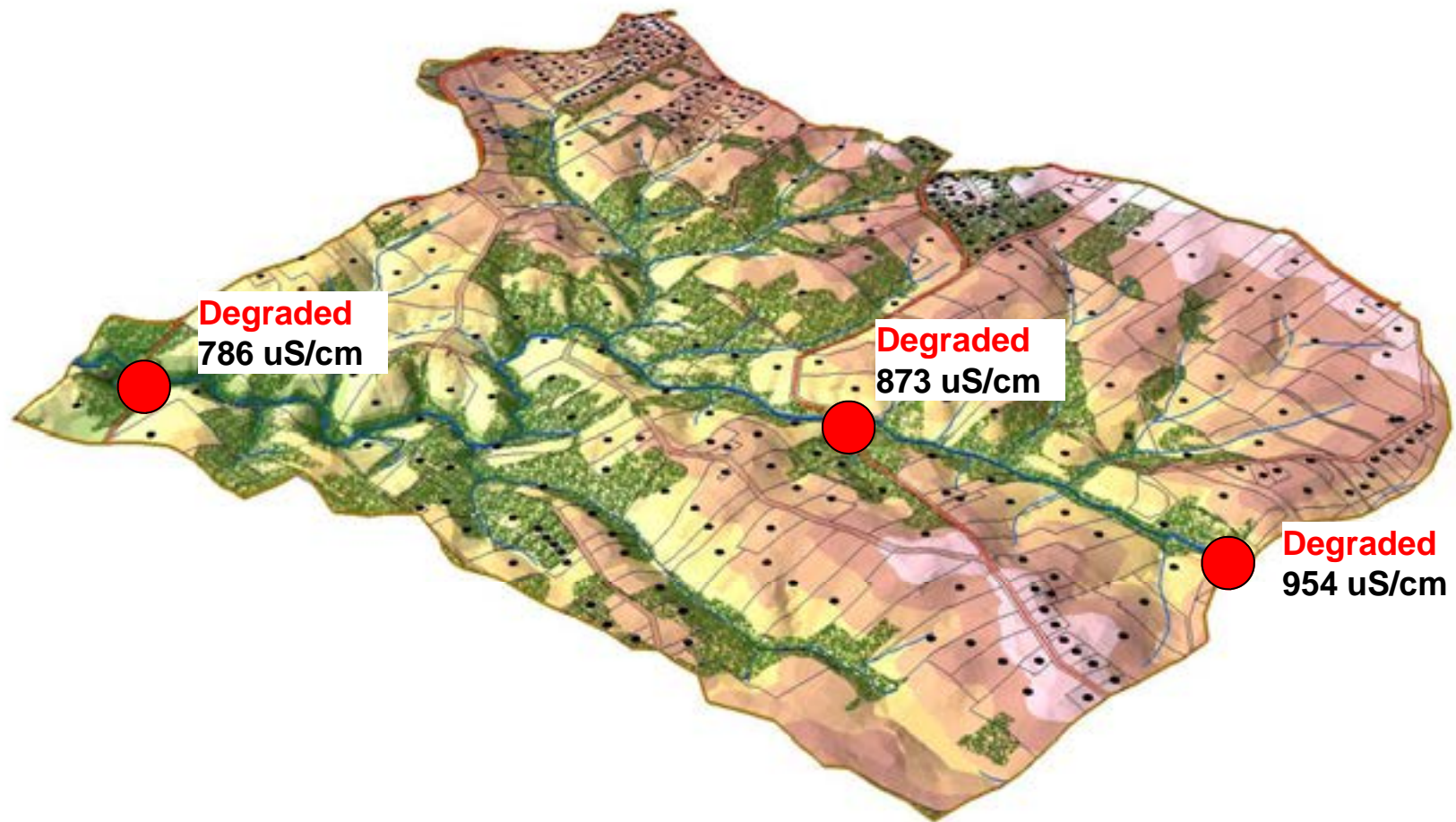
Andersons Creek



Andersons Creek



Jumping Creek (mean results)



Monitoring to Action

- Understanding our waterways
- Community Action – through targeted projects



The background is a solid blue gradient. At the top, there are several wavy, horizontal lines in shades of blue and cyan, creating a sense of movement or a horizon line. The text "Thank you" is positioned in the upper left quadrant.

Thank you